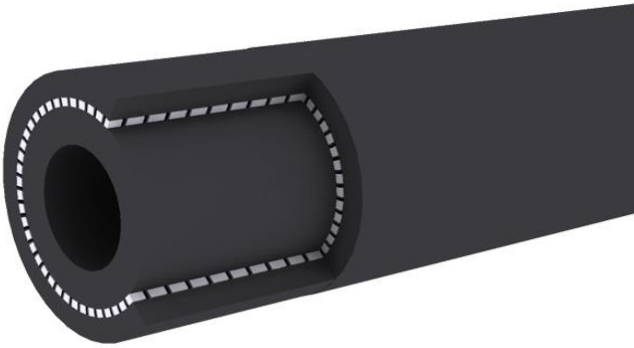


INFINITY AIR HOSE



Code	Diameter (mm)		Pressure (Bar)		Weight	Bending Radius	Length	
	ID	OD	Design	Burst	Kg/m	mm	m	
11-RAH-1006	1/4	6.4	14.0	20	60	0.18	44.8	100
11-RAH-1008	5/16	8.0	16.0	20	60	0.25	56.0	100
11-RAH-1010	3/8	9.5	18.4	20	60	0.32	66.5	100
11-RAH-1013	1/2	12.7	22.0	20	60	0.42	91.0	100
11-RAH-1016	5/8	16.0	26.5	20	60	0.58	112.0	100
11-RAH-1019	3/4	19.0	30.0	20	60	0.69	133.0	100
11-RAH-1025	1	25.4	36.5	20	60	0.89	177.8	100
11-RAH-1032	1 ¼	32.0	43.0	20	60	1.09	224.0	100
11-RAH-1038	1 ½	38.0	49.4	20	60	1.29	266.0	100

SPECIFICATION

Application: Softwall hose, flexible and lightweight, ideal for use at construction site, service station as well as mine where oil contact is minimal

Temperature: from -40°C to +85°C

CONSTRUCTION

Tube: Smoothbore SBR/NR rubber, resistant to oil mist.

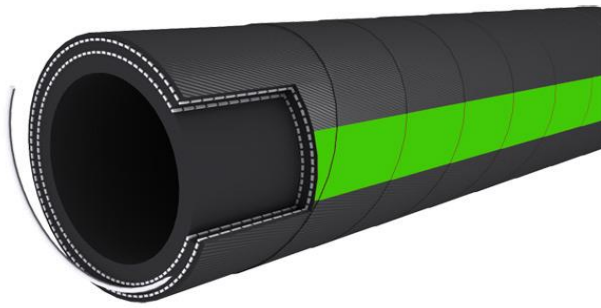
Reinforcement: High tensile synthetic cord

Cover: Black colour, EPDM rubber.

Branding: continuous white print in brand "INFINITY" Air Hose

Also available upon request: 1.Different diameters 2.Different working pressures

INFINITY BULK MATERIAL SUCTION & DISCHARGE HOSE



Code	Diameter (mm)			Pressure (Bar)		Weight Kg/m	Bending Radius mm	Length m
	ID	OD		Design	Burst			
11 - RHD - 2050	2"	51.0	70.0	10	30	2.98	350.0	30.5
11 - RHD - 2065	2 ½"	63.5	84.0	10	30	3.62	441.0	30.5
11 - RHD - 2080	3"	80.0	98.0	10	30	4.96	560.0	30.5
11 - RHD - 2032	3 ½"	89.0	111.0	10	30	5.71	630.0	30.5
11 - RHD - 2100	4"	102.0	124.0	10	30	6.45	700.0	30.5
11 - RHD - 2125	5"	127.0	154.0	10	30	9.84	840.0	30.5
11 - RHD - 2150	6"	152.0	179.0	10	30	11.60	1060	30.5
11 - RHD - 2200	8"	203.0	233.0	10	30	16.97	1400.0	30.5

Specification

Application: Hardwall hose, used for suction & delivery of bulk material like dry cement, sand, gravel, feed to ensure more effective services.

Temperature: from -40°C to +85°C

Standards: abrasion loss of the tube according to DIN 53516: 70 +/-5mm3.

CONSTRUCTION

Tube: black, smooth, compounded for long wear resistance.

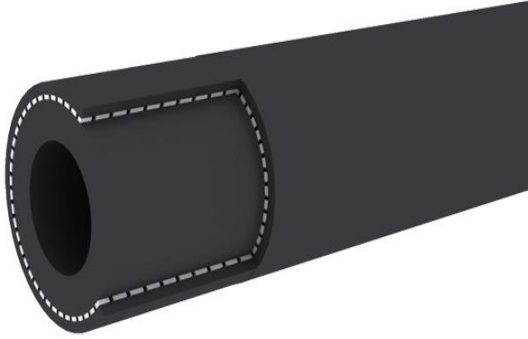
Reinforcement: high strength synthetic cord plus embedded steel wire helix.

Cover: black, smooth, (wrapped finish) Synthetic rubber, weather, ozone and wear resistant.

Branding: continuous spiral yellow brand 'INFINITY' "Bulk Material S&D Hose"

Also available upon request: 1.Different diameters 2.Different working pressures

INFINITY FUEL HOSE



Code	Diameter (mm)		Pressure (Bar)		Weight	Bending Radius	Length
	ID	OD	Design	Burst	Kg/m	mm	m
11-RFH-1004	4.0	10.0	10	30	0.29	-	100.0
11-RFH-1005	5.0	11.0	10	30	0.31	-	100.0
11- RFH -1006	6.0	12.0	10	30	0.35	-	100.0
11- RFH -1007	7.0	13.0	10	30	0.38	-	100.0
11- RFH -1008	8.0	14.0	10	30	0.41	-	100.0
11- RFH -1009	9.0	15.0	10	30	0.45	-	100.0
11- RFH -1010	10.0	16.0	10	30	0.48	-	100.0
11- RFH -1011	11.0	17.0	10	30	0.52	-	100.0
11- RFH -1012	12.0	19.0	10	30	0.55	-	100.0
11- RFH -1013	13.0	20.0	10	30	0.58	-	100.0
11- RFH -1014	14.0	21.0	10	30	0.61	-	100.0
11- RFH -1016	16.0	24.0	10	30	0.65	-	100.0

SPECIFICATION

Application: Softwall hose, flexible and lightweight, used for conveying of gasoline and fuel oil under moderate temperature.

Temperature: -32°C to +85°C.

CONSTRUCTION

Tube: black, smooth, NBR rubber.

Reinforcement: high tensile polyester yarn

Cover: black, smooth, (wrapped finish) SBR rubber, weathering resistant.

Branding: continuous white ink print brand 'INFINITY' "Fuel Hose"

Also available upon request: 1.Different diameters 2.Different working pressures

INFINITY FUEL & OIL SUCTION & DELIVERY HOSE



Code	Diameter (mm)		Pressure (Bar)		Weight	Bending Radius	Length	
	ID	OD	Design	Burst	Kg/m	mm	m	
11-OSD-2019	¾"	19	29	10	30	0.62	80	30.5
11- OSD -2025	1"	25	35	10	30	0.78	100	30.5
11- OSD -2032	1 ¼"	32	43	10	30	1.07	100	30.5
11- OSD -2038	1 ½"	38	50	10	30	1.37	150	30.5
11- OSD -2050	2"	51	63	10	30	1.77	205	30.5
11- OSD -2065	2 ½"	63.5	76	10	30	2.18	255	30.5
11- OSD -2080	3"	80	91	10	30	3.25	305	30.5
11- OSD -2090	3 ½"	89	105	10	30	4.03	380	30.5
11- OSD -2100	4"	102	118	10	30	4.57	400	30.5
11- OSD -2125	5"	127	147	10	30	7.11	510	30.5
11- OSD -2150	6"	152	172	10	30	8.41	610	30.5

SPECIFICATION

Application: Hardwall hose, flexible and lightweight, used for the suction and delivery of oil, fuel & petroleum with aromatic content up to 50% , excluding oils with ester base.

Standard: Complies to ISO 2929:2007

Temperature: -20°C (-4°F) to +100°C (+212°F).

CONSTRUCTION

Tube: black, smooth, NBR rubber.

Reinforcement: high strength synthetic cord plus embedded steel wire helix.

Cover: black, smooth, (wrapped finish) SBR rubber, weathering resistant.

Branding: continuous spiral red brand "INFINITY" "Oil S&D"

Also available upon request: 1.Different diameters 2.Different working pressures

INFINITY HD FUEL & OIL SUCTION & DISCHARGE HOSE



Code	Diameter (mm)		Pressure (Bar)		Weight	Bending Radius	Length	
	ID	OD	Design	Burst	Kg/m	mm	m	
11-OSD-3019	¾"	19	30	20	60	0.62	80	30.5
11- OSD -3025	1"	25	38	20	60	0.78	100	30.5
11- OSD -3032	1 ¼"	32	45	20	60	1.07	100	30.5
11- OSD -3038	1 ½"	38	52	20	60	1.37	150	30.5
11- OSD -3050	2"	51	65	20	60	1.77	205	30.5
11- OSD -3065	2 ½"	63.5	78	20	60	2.18	255	30.5
11- OSD -3080	3"	80	93	20	60	3.25	305	30.5
11- OSD -3090	3 ½"	89	107	20	60	4.03	380	30.5
11- OSD -3100	4"	102	120	20	60	4.57	400	30.5
11- OSD -3125	5"	127	150	20	60	7.11	510	30.5
11- OSD -3150	6"	152	175	20	60	8.41	610	30.5

SPECIFICATION

Application: Hardwall hose, flexible and lightweight, used for heavy duty suction and delivery of oil, fuel & petroleum with aromatic content up to 50% , excluding oils with ester base.

Standard: Complies to ISO 2929:2007

Temperature: -20°C (-4°F) to +100°C (+212°F).

CONSTRUCTION

Tube: black, smooth, NBR rubber.

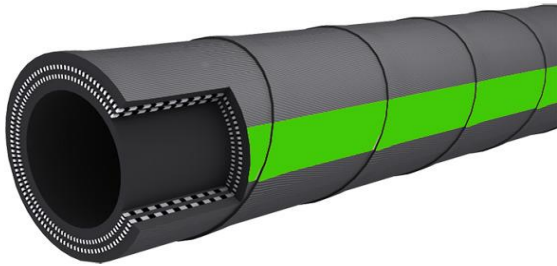
Reinforcement: high strength synthetic cord plus embedded steel wire helix.

Cover: black, smooth, (wrapped finish) SBR rubber, weathering resistant.

Branding: continuous spiral red brand 'INFINITY' "HD Oil S&D"

Also available upon request: 1.Different diameters 2.Different working pressures

INFINITY HD WATER DISCHARGE HOSE



Code	Diameter (mm)		Pressure (Bar)		Weight Kg/m	Bending Radius mm	Length m	
	ID	OD	Design	Burst				
11-RWD-2032	1 ¼	32.0	45.0	20	60	0.74	224.0	30.5
11-RWD-2038	1 ½	38.0	51.0	20	60	0.87	266.0	30.5
11-RWD-2050	1 ¾	45.0	58.0	20	60	1.29	315.0	30.5
11-RWD-2050	2	51.0	65.0	20	60	1.45	357.0	30.5
11-RWD-2065	2 ½	64.0	79.0	20	60	1.79	448.0	30.5
11-RWD-2080	3	76.0	93.0	20	60	2.10	532.0	30.5
11-RWD-2090	3 ½	89.0	101.0	20	60	2.43	623.0	30.5
11-RWD-2100	4	102.0	119.0	20	60	3.36	714.0	30.5
11-RWD-2115	4 ½	114.0	128.0	20	60	3.73	798.0	30.5
11-RWD-2125	5	127.0	140.0	20	60	4.14	889.0	30.5
11-RWD-2150	6	152.0	176.0	20	60	4.92	1064.0	30.5
11-RWD-2200	8	203.0	222.0	20	60	8.76	1421.0	30.5
11-RWD-2250	10	254.0	274.0	20	60	10.87	1778.0	30.5

SPECIFICATION

Application: Heavy Duty Softwall hose, flexible and lightweight, ideal for use a heavy duty discharge hose suitable for use in agriculture, construction and mining industries. This hose is suitable for water and light slurry transfer in both negative and positive pressure application.

Temperature: from -40°C (-40°F) to +85°C (+185°F).

CONSTRUCTION

Tube: black SBR rubber

Reinforcement: high strength polyester cord.

Cover: black SBR rubber, wrapped surface, weathering, ozone and ageing resistant.

Branding: continuous blue stripe “INFINITY HD Water Discharge”.

Also available upon request: 1.Different diameters 2.Different working pressures

INFINITY HD WATER SUCTION & DISCHARGE HOSE



Code	Diameter (mm)			Pressure (Bar)		Weight Kg/m	Bending Radius mm	Length m
	ID	OD		Design	Burst			
11-RWS-2032	1	25.0	37.0	20	60	0.78	125.0	30.5
11-RWS-2032	1 ¼	32.0	44.0	20	60	0.96	160.0	30.5
11-RWS-2038	1 ½	38.0	51.0	20	60	1.24	190.0	30.5
11-RWS-2050	2	51.0	65.0	20	60	1.77	255.0	30.5
11-RWS-2065	2 ½	64.0	79.0	20	60	2.18	380.0	30.5
11-RWS-2080	3	76.0	93.0	20	60	3.01	455.0	30.5
11-RWS-2090	3 ½	89.0	106.0	20	60	3.76	480.0	30.5
11-RWS-2100	4	102.0	120.0	20	60	4.26	610.0	30.5
11-RWS-2125	5	127.0	148.0	20	60	6.36	700.0	30.5
11-RWS-2150	6	152.0	176.0	20	60	7.96	1000.0	30.5
11-RWS-2200	8	203.0	231.0	20	60	11.63	1421.0	30.5

SPECIFICATION

Application: Hardwall hose, flexible and lightweight, ideal for use a heavy duty suction & discharge hose suitable for use in agriculture, construction, mining and wider application. This hose is suitable for water and light slurry transfer in both negative and positive pressure application.

Standard: Complies to ISO 4641:2012

Temperature: from -40°C (-40°F) to +85°C (+185°F).

CONSTRUCTION

Tube: black EPDM rubber

Reinforcement: high strength polyester cord. And supported with helix wire

Cover: black EPDM rubber, wrapped surface, weathering, ozone and ageing resistant.

Branding: continuous blue stripe “INFINITY HD Water S&D”.

Also available upon request: 1.Different diameters 2.Different working pressures

INFINITY HEAVY DUTY AIR HOSE



Code	Diameter (mm)		Pressure (Bar)		Weight Kg/m	Bending Radius mm	Length m	
	ID	OD	Design	Burst				
11-RAH-1025	1	25.4	37.0	20	60	0.96	177.8	30.5
11-RAH-1032	1 ¼	32.0	46.0	20	60	1.42	224.0	30.5
11-RAH-1038	1 ½	38.0	52.0	20	60	1.63	266.0	30.5
11-RAH-1013	2	51.0	67.0	20	60	2.45	357.0	30.5
11-RAH-1016	2 ½	64.0	81.0	20	60	3.19	448.0	30.5
11-RAH-1019	3	76.0	96.0	20	60	4.46	532.0	30.5
11-RAH-1025	3 ½	89.0	110.0	20	60	5.42	623.0	30.5
11-RAH-1038	4	102.0	122.0	20	60	5.81	714.0	30.5

SPECIFICATION

Application: Softwall hose, flexible and lightweight, ideal for use in mines, quarries, construction sites and industrial applications with some contact of oil traces.

Temperature: from -40°C to +85°C

CONSTRUCTION

Tube: Smoothbore SBR/NR rubber, resistant to oil mist.

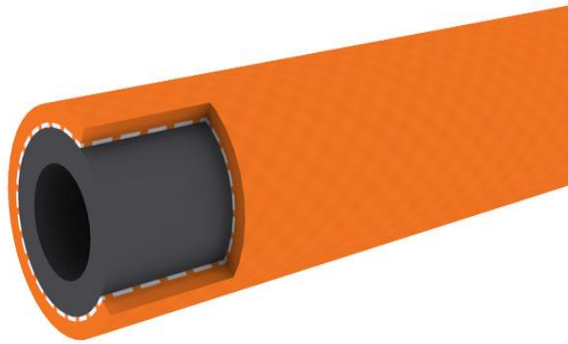
Reinforcement: High tensile synthetic cord

Cover: yellow, smooth, (wrapped finish) EPDM rubber, abrasion & weathering resistant..

Branding: continuous colour stripe “INFINITY Heavy Duty Air Hose”.

Also available upon request: 1.Different diameters 2.Different working pressures

INFINITY LIQUIFIED PETROLEUM GAS HOSE (LPG)



Code	Diameter (mm)		Pressure (Bar)		Weight Kg/m	Bending Radius mm	Length m	
	ID	OD	Design	Burst				
11-RGD-5008	5/16	7.9	16.0	10	30	0.25	-	100.0
11-RGD-5010	3/8	9.5	18.0	10	30	0.30	-	100.0
11-RGD-5012	1/2	12.7	22.0	10	30	0.39	-	100.0
11-RGD-5008	5/8	15.9	26.0	10	30	0.54	-	100.0
11-RGD-5010	3/4	19.1	29.7	10	30	0.67	-	100.0
11-RGD-5012	7/8	22.2	33.0	10	30	0.77	-	100.0
11-RGD-5012	1	25.4	36.4	10	30	0.88	-	100.0

SPECIFICATION

Application: Softwall hose ideal for use in transfer of oxygen gas for welding works and gas cutting application.

Temperature: from -40°C to +85°C

CONSTRUCTION

Tube: Smoothbore NBR rubber.

Reinforcement: Using high tensile polyester yarn.

Cover: Orange colour, CR rubber resistant to abrasion, heat and weather.

Branding: continuous black print ink “INFINITY LPG”

Also available upon request: 1.Different diameters 2.Different working pressures

INFINITY AIR HOSE



Code	Diameter (mm)		Pressure (Bar)		Weight <i>Kg/m</i>	Bending Radius <i>mm</i>	Length <i>m</i>	
	<i>ID</i>	<i>OD</i>	<i>Design</i>	<i>Burst</i>				
11-RAH-1025	1	25.4	37.0	20	60	0.96	177.8	30.5
11-RAH-1032	1 ¼	32.0	46.0	20	60	1.42	224.0	30.5
11-RAH-1038	1 ½	38.0	52.0	20	60	1.63	266.0	30.5
11-RAH-1013	2	51.0	67.0	20	60	2.45	357.0	30.5
11-RAH-1016	2 ½	64.0	81.0	20	60	3.19	448.0	30.5
11-RAH-1019	3	76.0	96.0	20	60	4.46	532.0	30.5
11-RAH-1025	3 ½	89.0	110.0	20	60	5.42	623.0	30.5
11-RAH-1038	4	102.0	122.0	20	60	5.81	714.0	30.5

SPECIFICATION

Application: Softwall hose, flexible and lightweight, ideal for use in heavy duty application like mining, and industrial application

Temperature: from -40°C to +85°C

CONSTRUCTION

Tube: Smoothbore SBR/NR rubber, resistant to oil mist.

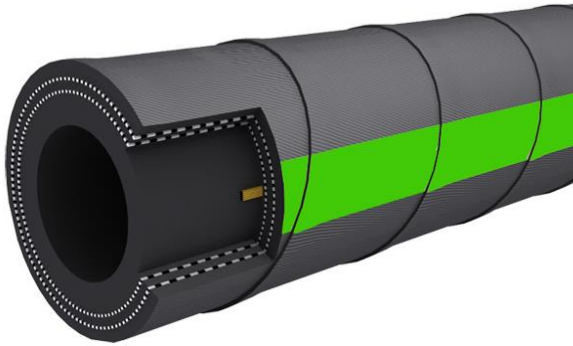
Reinforcement: High tensile synthetic cord

Cover: black, smooth, (wrapped finish) EPDM rubber, weathering resistant.

Branding: continuous white stripe “INFINITY Air Hose”.

Also available upon request: 1.Different diameters 2.Different working pressures

INFINITY SAND BLAST HOSE



Code	Diameter (mm)			Pressure (Bar)		Weight Kg/m	Bending Radius mm	Length m
	ID	OD		Design	Burst			
11 - RHD - 1012	½"	12.0	28.0	12	36	0.79	-	30.5
11 - RHD - 1019	¾"	19.0	38.0	12	36	1.40	-	30.5
11 - RHD - 1025	1"	25.0	48.0	12	36	2.18	-	30.5
11 - RHD - 1032	1 ¼"	32.0	55.0	12	36	2.60	-	30.5
11 - RHD - 1038	1 ½"	38.0	61.0	12	36	2.95	-	30.5
11 - RHD - 1050	2"	51.0	74.0	12	36	3.73	-	30.5
11 - RHD - 1065	2 ½"	63.5	84.0	12	36	4.56	-	30.5
11 - RHD - 1080	3"	80.0	100.0	12	36	5.70	-	30.5
11 - RHD - 1100	4"	102.0	122.0	12	36	6.45	-	30.5

SPECIFICATION

Application: Softwall hose, used for blasting services with a special high abrasive resistant tube which is anti-static

Temperature: from -30 ° C to 80 ° C

Standards: abrasion loss of the tube according to DIN 53516: 70 +/-5mm³.

CONSTRUCTION

Tube: black, smooth, NR rubber, abrasion resistant

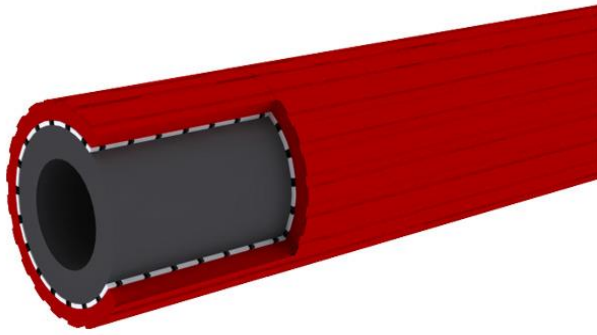
Reinforcement: high strength synthetic cord

Cover: black, smooth (wrapped finish), EPDM rubber, weathering and ozone resistant.

Branding: continuous spiral yellow brand 'INFINITY' "Sandblast Hose"

Also available upon request: 1.Different diameters 2.Different working pressures

INFINITY SINGLE WELDING HOSE (ACETYLENE)



Code	Diameter (mm)			Pressure (Bar)		Weight Kg/m	Bending Radius mm	Length m
	ID	OD		Design	Burst			
11-RGD-2004	³ / ₁₆	4.8	12.0	20	60	0.16	-	100.0
11-RGD-2006	¹ / ₄	6.4	14.0	20	60	0.20	-	100.0
11-RGD-2008	⁵ / ₁₆	7.9	16.0	20	60	0.25	-	100.0
11-RGD-2010	³ / ₈	9.5	18.0	20	60	0.30	-	100.0
11-RGD-2012	¹ / ₂	12.7	22.0	20	60	0.42	-	100.0

SPECIFICATION

Application: Softwall hose ideal for use in transfer of oxygen gas for welding works and gas cutting application.

Temperature: from -45°C to +85°C

CONSTRUCTION

Tube: blue SBR/NR rubber

Reinforcement: high strength polyester cord.

Cover: red EPDM rubber, weathering, ozone and ageing resistant.

Branding: continuous white print ink “INFINITY Acetylene”.

Also available upon request: 1.Different diameters 2.Different working pressures

INFINITY SINGLE WELDING HOSE (OXYGEN)



Code	Diameter (mm)			Pressure (Bar)		Weight Kg/m	Bending Radius mm	Length m
	ID	OD		Design	Burst			
11-RGD-1004	3/16	4.8	12.0	20	60	0.16	-	100.0
11-RGD-1006	1/4	6.4	14.0	20	60	0.20	-	100.0
11-RGD-1008	5/16	7.9	16.0	20	60	0.25	-	100.0
11-RGD-1010	3/8	9.5	18.0	20	60	0.30	-	100.0
11-RGD-1012	1/2	12.7	22.0	20	60	0.42	-	100.0

SPECIFICATION

Application: Softwall hose ideal for use in transfer of oxygen gas for welding works and gas cutting application.

Temperature: from -45°C to +85°C

CONSTRUCTION

Tube: blue SBR/NR rubber

Reinforcement: high strength polyester cord.

Cover: blue EPDM rubber, weathering, ozone and ageing resistant.

Branding: continuous white print ink “INFINITY Oxygen”.

Also available upon request: 1.Different diameters 2.Different working pressures

INFINITY SUPREME AIR HOSE



Code	Diameter (mm)			Pressure (Bar)		Weight	Bending Radius	Length
	ID		OD	Design	Burst	Kg/m	mm	m
11-RAH-1010	3/8	9.5	18.4	20	60	0.32	66.5	100
11-RAH-1013	1/2	12.7	22.0	20	60	0.42	91.0	100
11-RAH-1016	5/8	16.0	26.5	20	60	0.58	112.0	100
11-RAH-1019	3/4	19.0	30.0	20	60	0.69	133.0	100
11-RAH-1025	1	25.4	36.5	20	60	0.89	177.8	100

SPECIFICATION

Application: Softwall hose, flexible and lightweight, ideal for use as air tools where the air contains some traces of oil and other contaminants.

Temperature: from -40°C to +85°C

CONSTRUCTION

Tube: Smoothbore NBR rubber

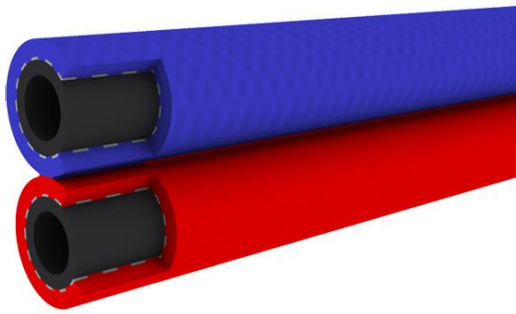
Reinforcement: High tensile synthetic cord

Cover: yellow, smooth, EPDM rubber, weathering resistant.

Branding: continuous white print in brand 'INFINITY' Supreme Air Hose

Also available upon request: 1.Different diameters 2.Different working pressures

INFINITY TWIN WELDING HOSE (Complies to ISO 3821: 2002)



TWIN LINES								
Code	Diameter (mm)			Pressure (Bar)		Weight Kg/m	Bending Radius mm	Length m
	ID	OD		Design	Burst			
11-RGD-3004	³ / ₁₆	4.8	12.0	20	60	0.31	-	100.0
11-RGD-3006	¹ / ₄	6.4	14.0	20	60	0.40	-	100.0
11-RGD-3008	⁵ / ₁₆	7.9	16.0	20	60	0.50	-	100.0

DOUBLE LINES								
Code	Diameter (mm)			Pressure (Bar)		Weight Kg/m	Bending Radius mm	Length m
	ID	OD		Design	Burst			
11-RGD-4004	¹ / ₄ + ⁵ / ₁₆	6.4 + 7.9	12.0	20	60	0.45	-	100.0
11-RGD-4008	⁵ / ₁₆ + ³ / ₈	7.9 + 9.5	16.0	20	60	0.55	-	100.0

SPECIFICATION

Application: Softwall twin hose ideal for use in welding works and gas cutting application requiring double lines consisting of oxygen and acetylene.

Temperature: from -45°C to +85°C

CONSTRUCTION

Tube: black SBR/NR rubber

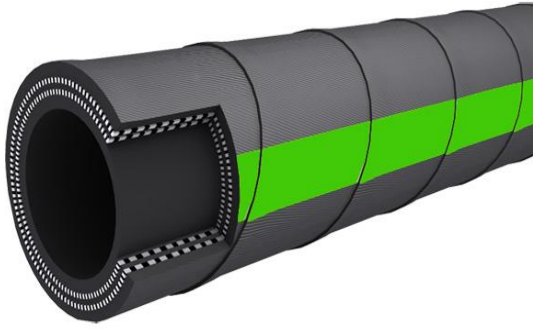
Reinforcement: high strength polyester cord.

Cover: blue & red EPDM rubber, weathering, ozone and ageing resistant.

Branding: continuous white print ink "INFINITY Oxygen/Acetylene".

Also available upon request: 1.Different diameters 2.Different working pressures

INFINITY WATER DISCHARGE HOSE



Code	Diameter (mm)		Pressure (Bar)		Weight Kg/m	Bending Radius mm	Length m	
	ID	OD	Design	Burst				
11-RWD-1032	1 ¼	32.0	40.0	10	30	0.74	224.0	30.5
11-RWD-1038	1 ½	38.0	46.0	10	30	0.87	266.0	30.5
11-RWD-1050	1 ¾	45.0	55.0	10	30	1.29	315.0	30.5
11-RWD-1050	2	51.0	61.0	10	30	1.45	357.0	30.5
11-RWD-1065	2 ½	64.0	74.0	10	30	1.79	448.0	30.5
11-RWD-1080	3	76.0	86.0	10	30	2.10	532.0	30.5
11-RWD-1090	3 ½	89.0	99.0	10	30	2.43	623.0	30.5
11-RWD-1100	4	102.0	114.0	10	30	3.36	714.0	30.5
11-RWD-1115	4 ½	114.0	126.0	10	30	3.73	798.0	30.5
11-RWD-1125	5	127.0	139.0	10	30	4.14	889.0	30.5
11-RWD-1150	6	152.0	164.0	10	30	4.92	1064.0	30.5
11-RWD-1200	8	203.0	219.0	10	30	8.76	1421.0	30.5
11-RWD-1250	10	254.0	270.0	10	30	10.87	1778.0	30.5

SPECIFICATION

Application: Softwall hose, flexible and lightweight, ideal for use as a medium duty discharge hose suitable for use in agriculture, construction and mining industries. This hose is suitable for water and light slurry transfer in both negative and positive pressure application.

Temperature: from -40°C (-40°F) to +85°C (+185°F).

CONSTRUCTION

Tube: black SBR rubber

Reinforcement: high strength polyester cord.

Cover: black SBR rubber, wrapped surface, weathering, ozone and ageing resistant.

Branding: continuous blue stripe “INFINITY Water Discharge”.

Also available upon request: 1. Different diameters 2. Different working pressures

INFINITY WATER SUCTION & DISCHARGE HOSE



Code	Diameter (mm)			Pressure (Bar)		Weight	Bending Radius	Length
	ID	OD		Design	Burst	Kg/m	mm	m
11-RWS-1032	1	25.0	35.0	10	30	0.78	125.0	30.5
11-RWS-1032	1 ¼	32.0	43.0	10	30	0.96	160.0	30.5
11-RWS-1038	1 ½	38.0	49.0	10	30	1.24	190.0	30.5
11-RWS-1050	2	51.0	63.0	10	30	1.77	255.0	30.5
11-RWS-1065	2 ½	64.0	76.0	10	30	2.18	380.0	30.5
11-RWS-1080	3	76.0	90.0	10	30	3.01	455.0	30.5
11-RWS-1090	3 ½	89.0	104.0	10	30	3.76	480.0	30.5
11-RWS-1100	4	102.0	114.0	10	30	4.26	610.0	30.5
11-RWS-1125	5	127.0	145.0	10	30	6.36	700.0	30.5
11-RWS-1150	6	152.0	167.0	10	30	7.96	1000.0	30.5
11-RWS-1200	8	203.0	224.0	10	30	11.63	1421.0	30.5

SPECIFICATION

Application: Hardwall hose, flexible and lightweight, ideal for use a medium duty suction & discharge hose suitable for use in agriculture, construction, mining and wider application. This hose is suitable for water and light slurry transfer in both negative and positive pressure application.

Standard: Complies to ISO 4641:2012

Temperature: from -40°C (-40°F) to +85°C (+185°F).

CONSTRUCTION

Tube: black EPDM rubber

Reinforcement: high strength polyester cord. And supported with helix wire

Cover: black EPDM rubber, wrapped surface, weathering, ozone and ageing resistant.

Branding: continuous blue stripe "INFINITY" Water S&D".

Also available upon request: 1.Different diameters 2.Different working pressures